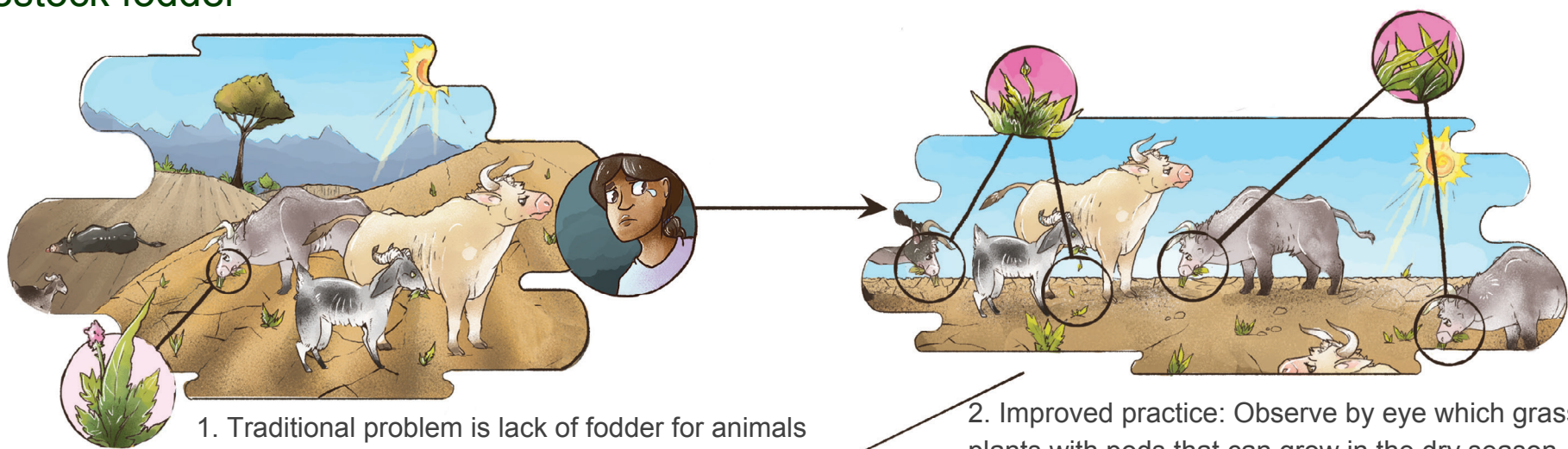
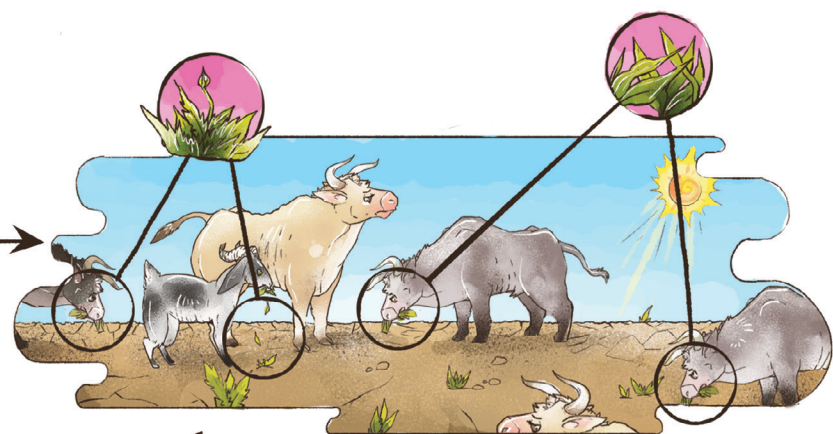


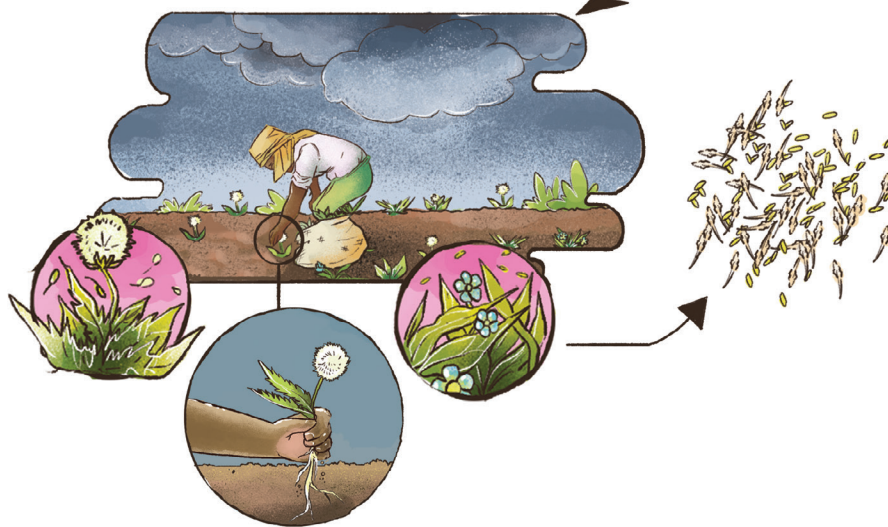
# Lesson: Observe which plants grow in the dry season, then deliberately grow them, to provide livestock fodder



1. Traditional problem is lack of fodder for animals in the dry season



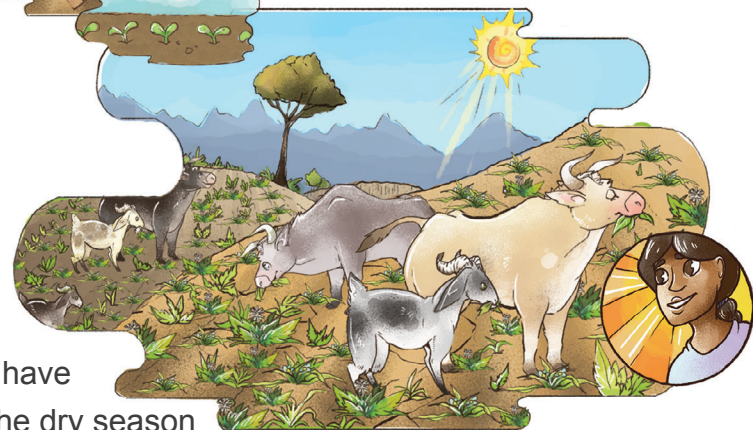
2. Improved practice: Observe by eye which grasses and plants with pods that can grow in the dry season, and which livestock eat



3. Collect these seeds after they flower



4. Sow these collected seeds at the end of the rainy season



5. Animals have fodder in the dry season