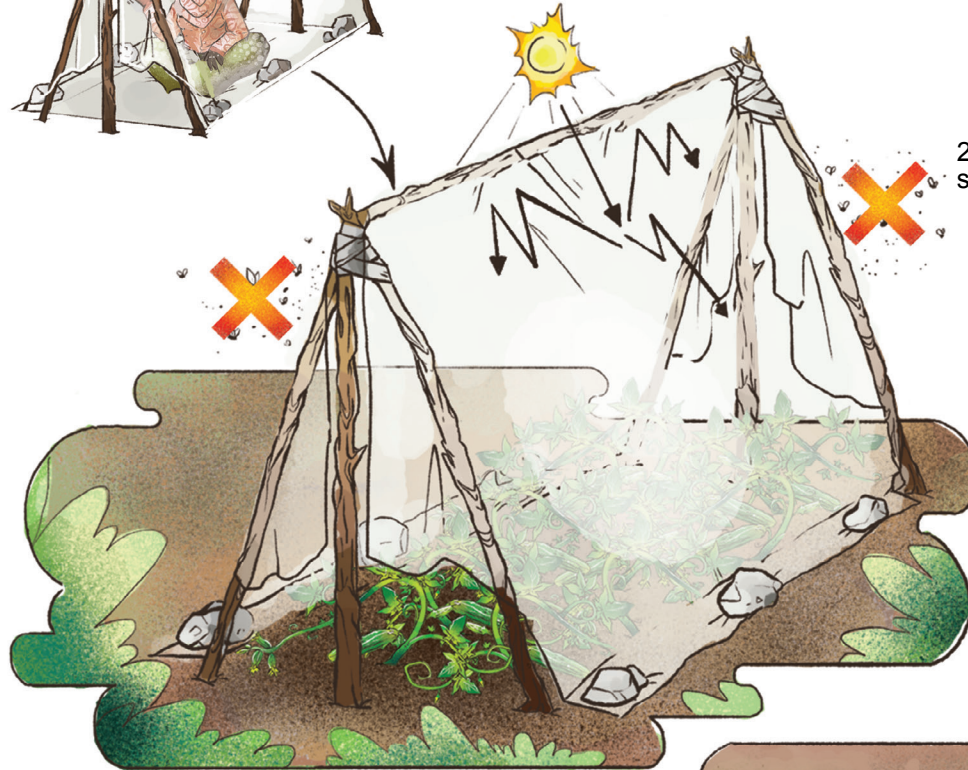
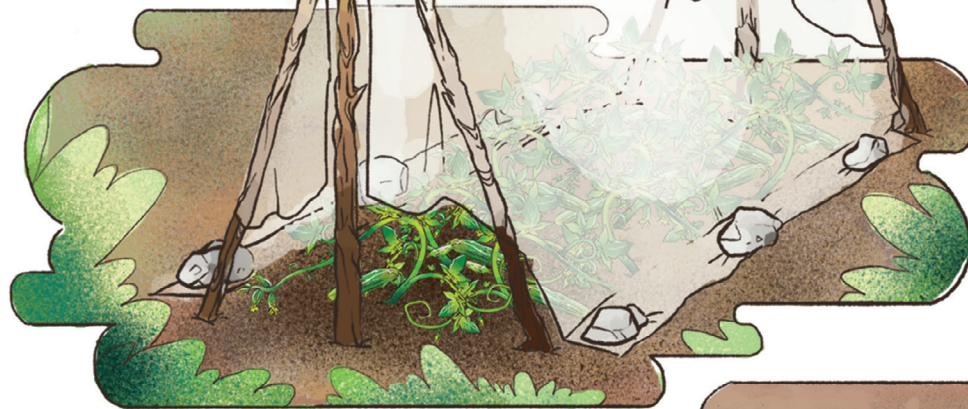


# Lesson: A tent shelter can be re-purposed later into a greenhouse or shade house for plants

1. Tent



2. If clear plastic, then use as a greenhouse in the winter season, or to protect against insects.



3. If dark plastic, then open sides of tent and use as a shade house to assist young vegetable seedlings to grow.

4. Example of greenhouse on terrace

