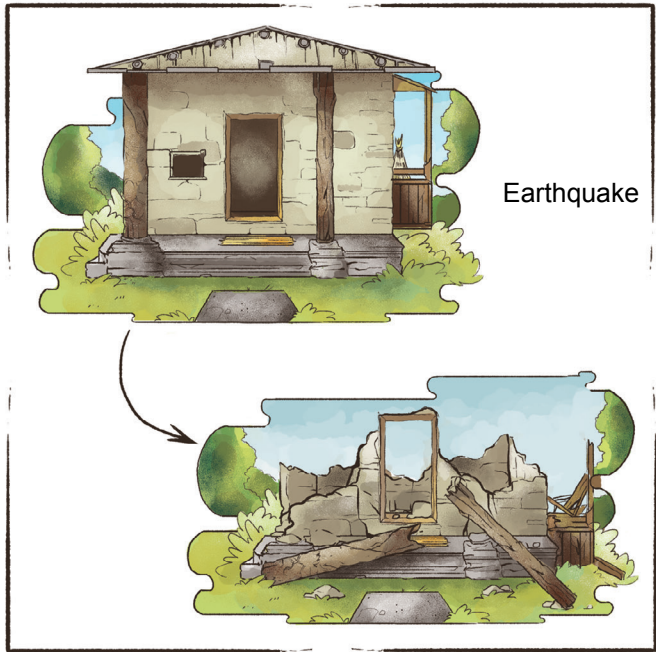
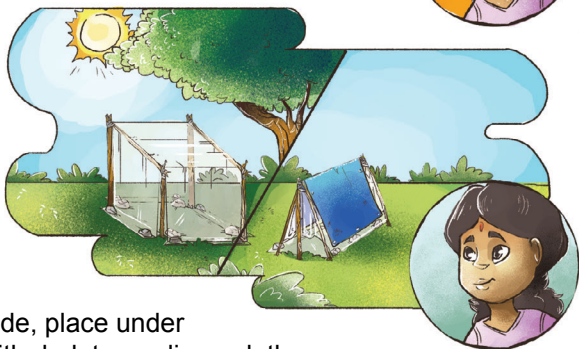
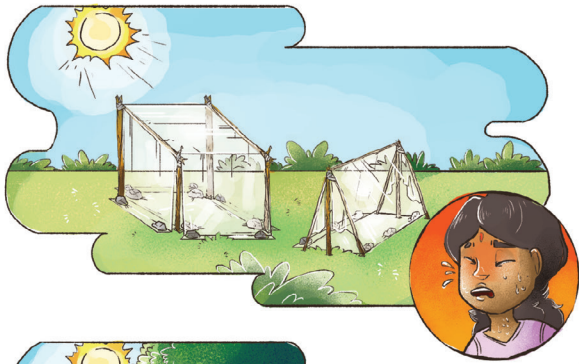


# Lesson: How to build shelter from a roll of tarpaulin or plastic sheets

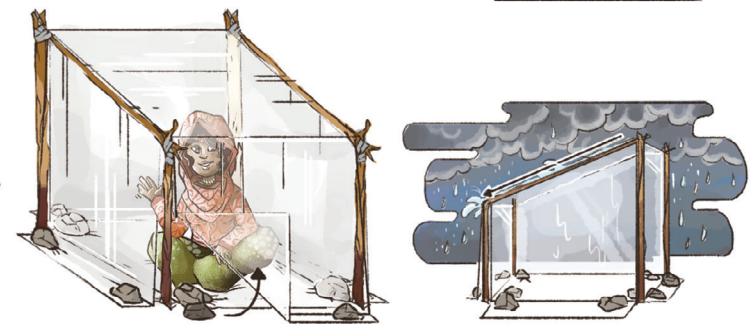


1. Wood frame tied with rope or duct tape (water proof)

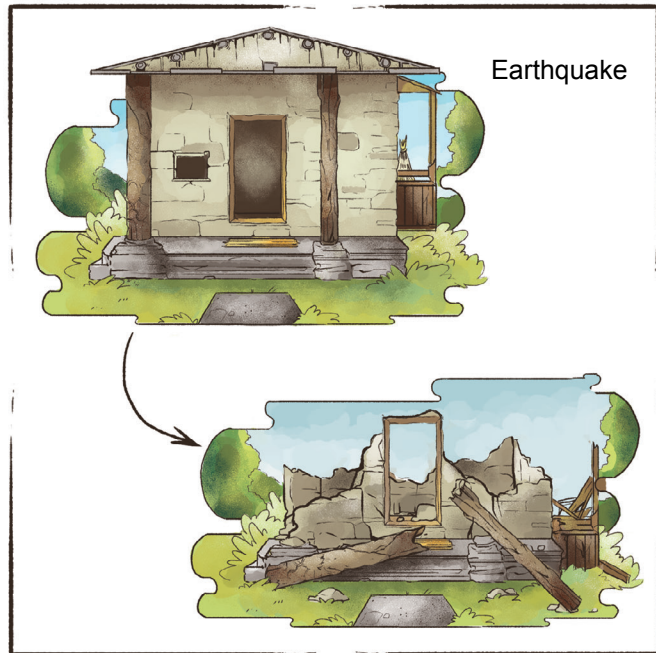
2. Roll of tarpaulin or plastic



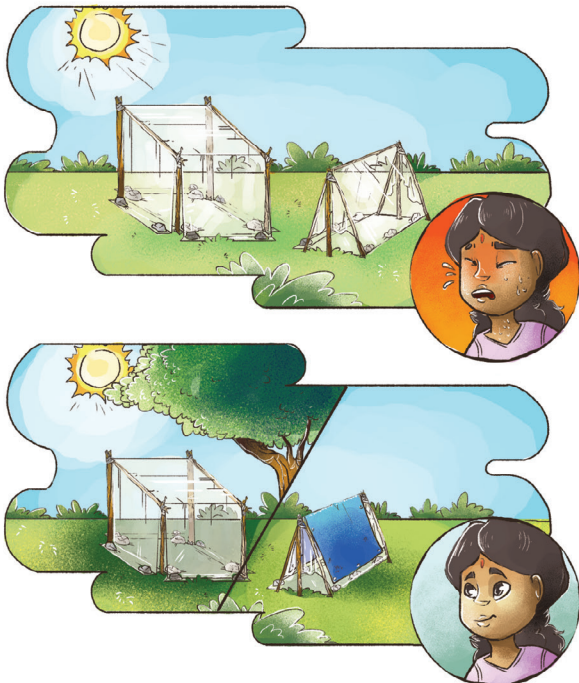
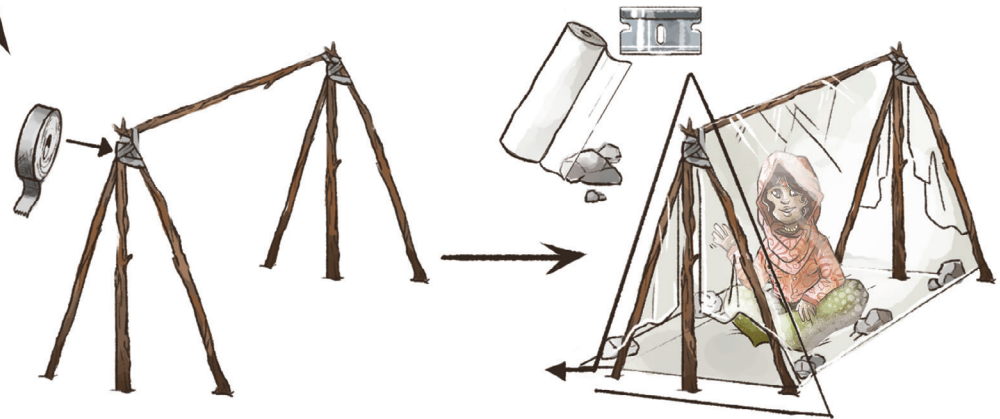
3. For shade, place under trees or with dark tarpaulin or cloth



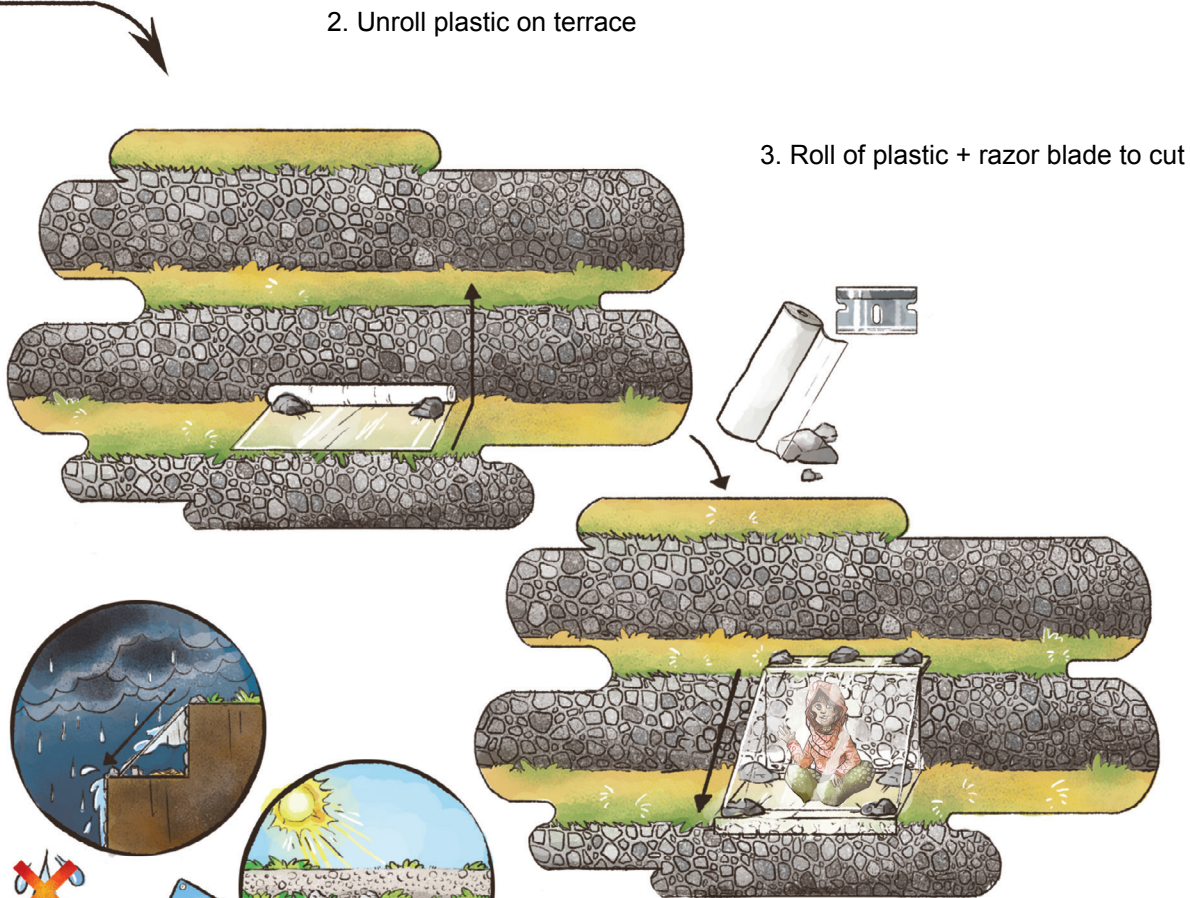
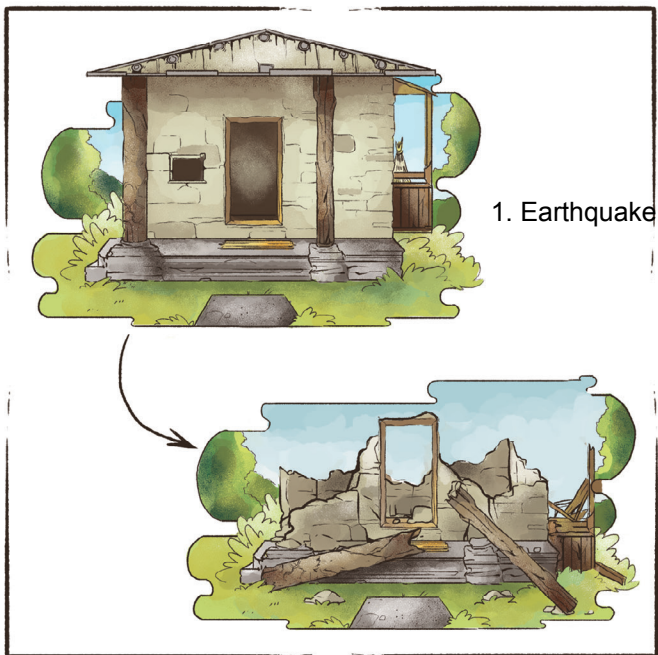
# Lesson: How to build shelter from a roll of tarpaulin or plastic sheets



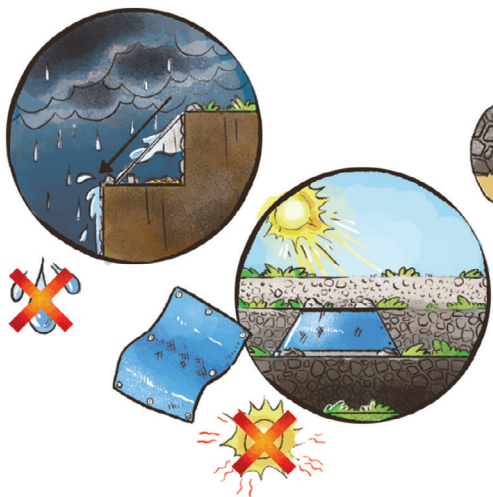
1. Wood frame tied with rope or duct tape (water proof)



# Lesson: How to build a shelter from a roll of tarpaulin or plastic sheets, rapidly, without using wood by using the terrace wall

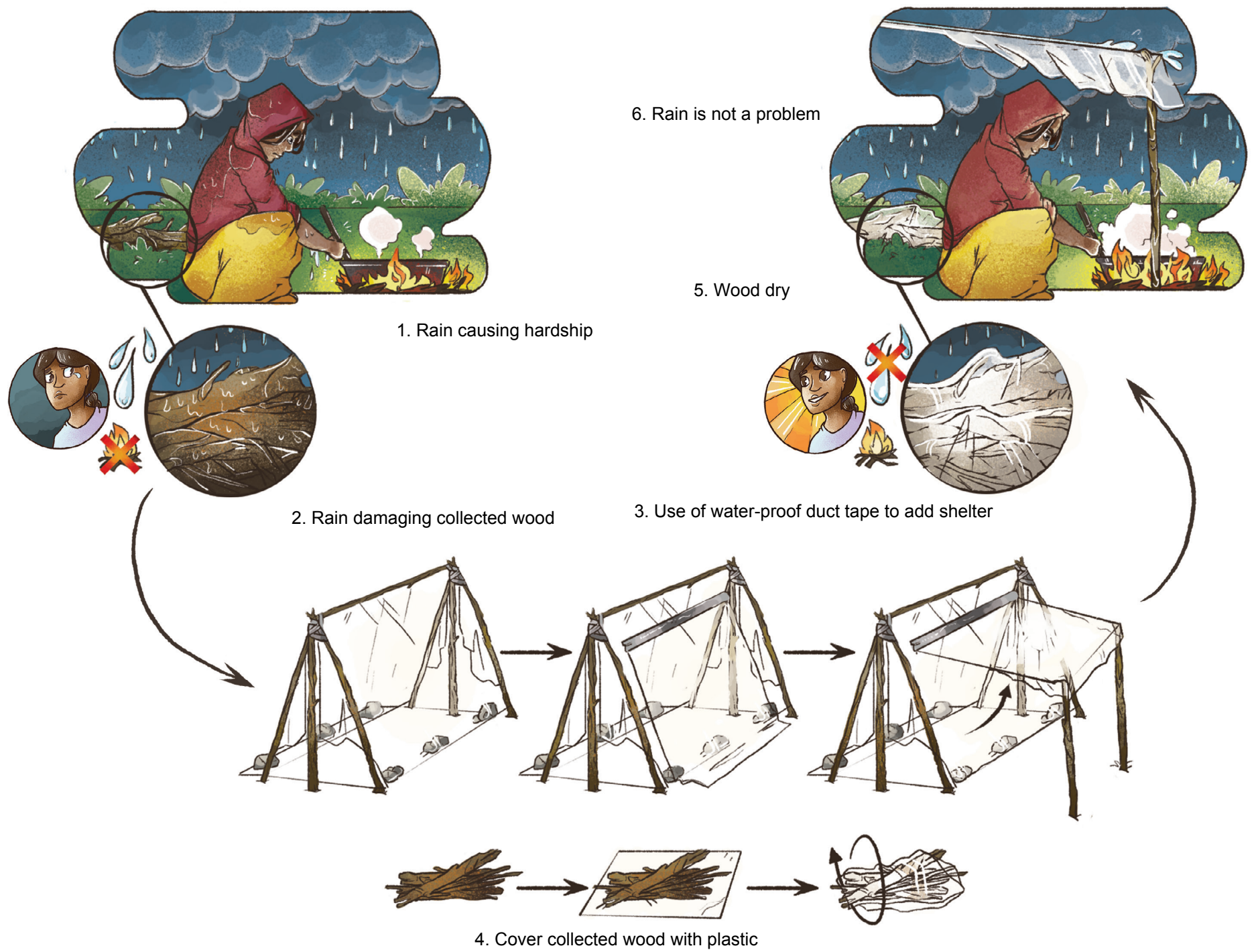


4. Place in area with low water flow



5. For shade, cover with dark tarpaulin or dark cloth

Lesson: Roll of plastic or tarpaulin can be used to create a shelter for cooking and to keep collected wood dry

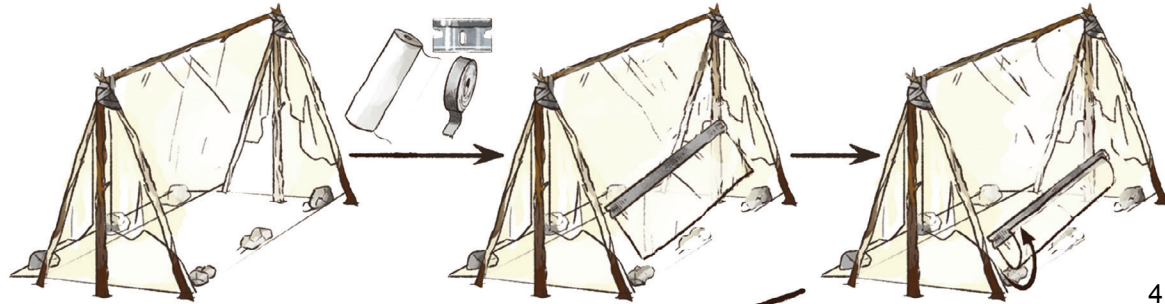


# Lesson: A roll of plastic or tarpaulin may be used to collect clean drinking water from rainfall (water harvesting)



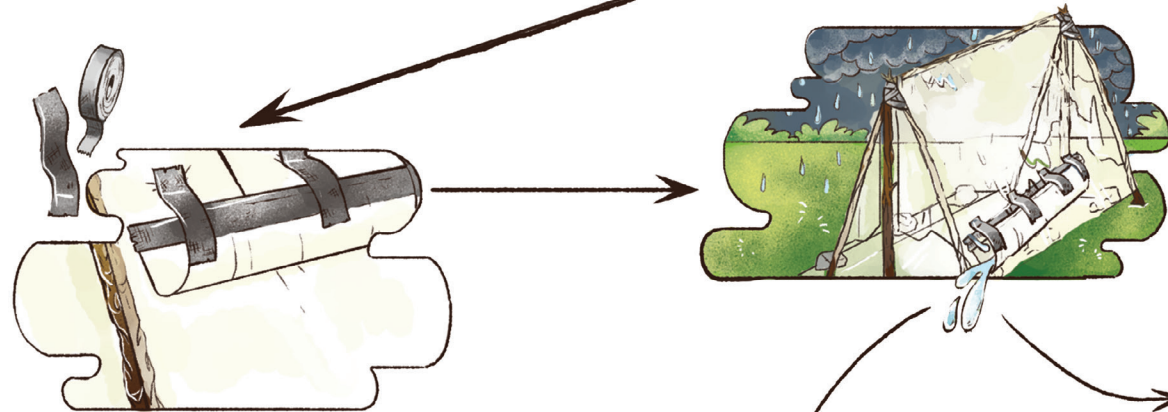
1. Thirsty

2. Roll of plastic, razor blade and water-proof duct tape



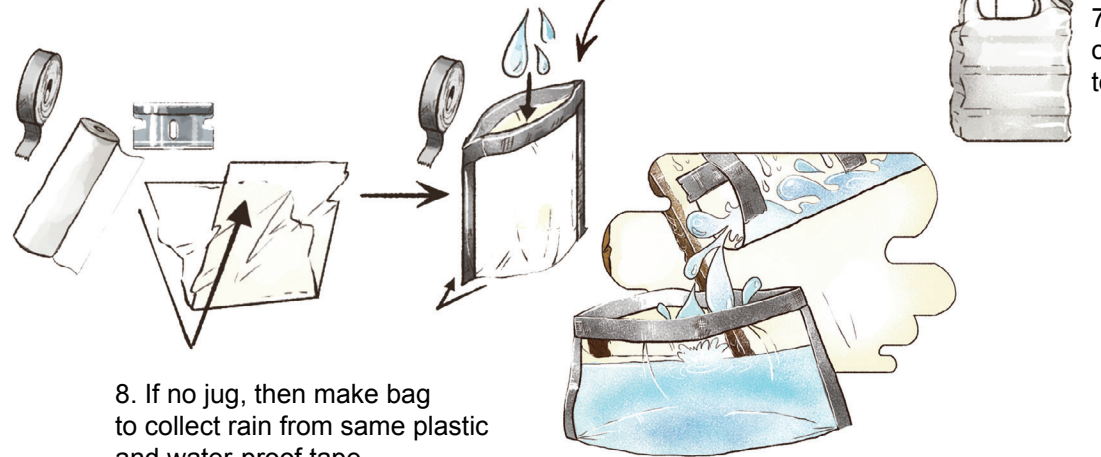
3. Tape plastic at a sloping angle

4. Fold up



5. Add tape

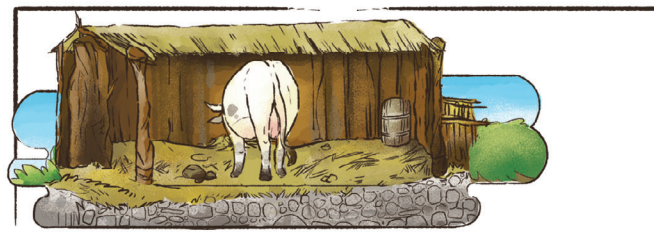
6. Collect rain



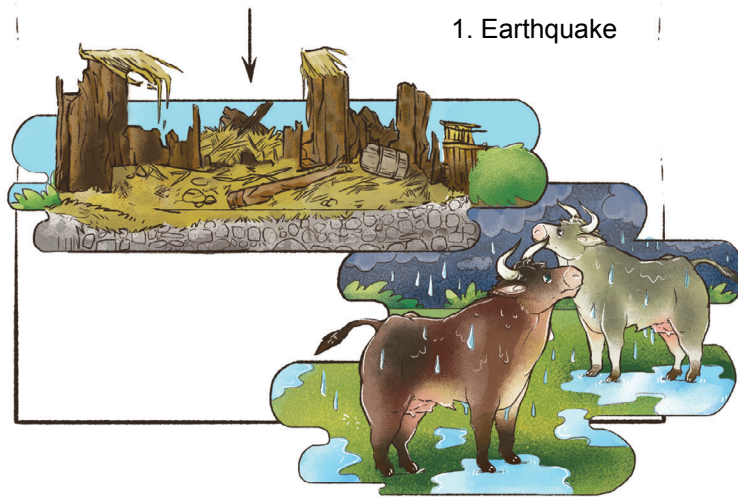
7. Use jug or container to collect rain

8. If no jug, then make bag to collect rain from same plastic and water-proof tape

# Lesson: A shelter can be made for animals using a roll of plastic or tarpaulin



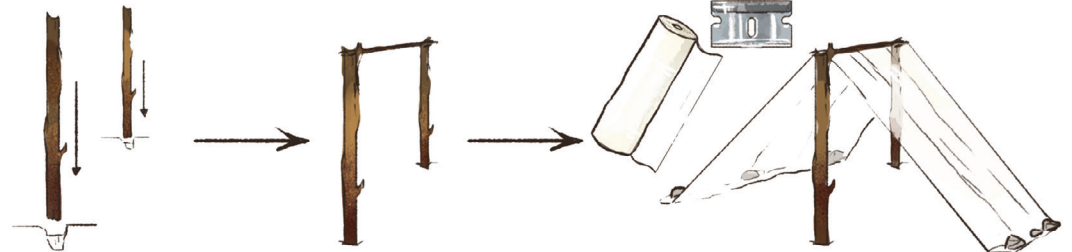
1. Earthquake



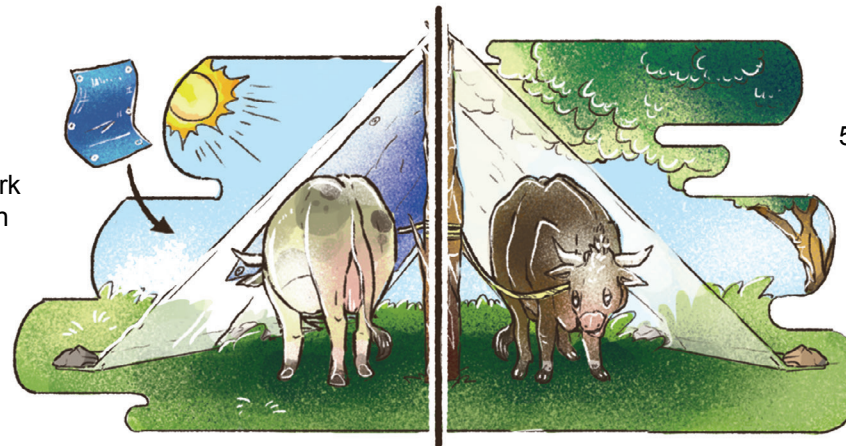
2. Roll of plastic or tarpaulin



3. Razor blade for cutting



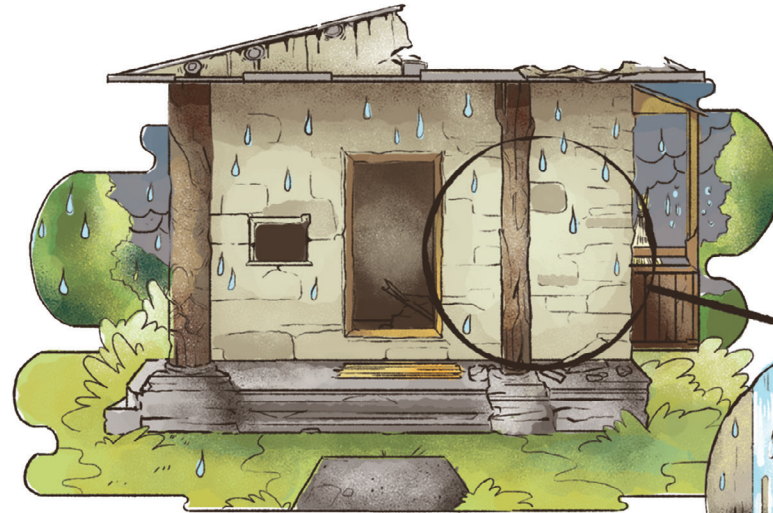
4. For shade, add dark tarpaulin or dark cloth



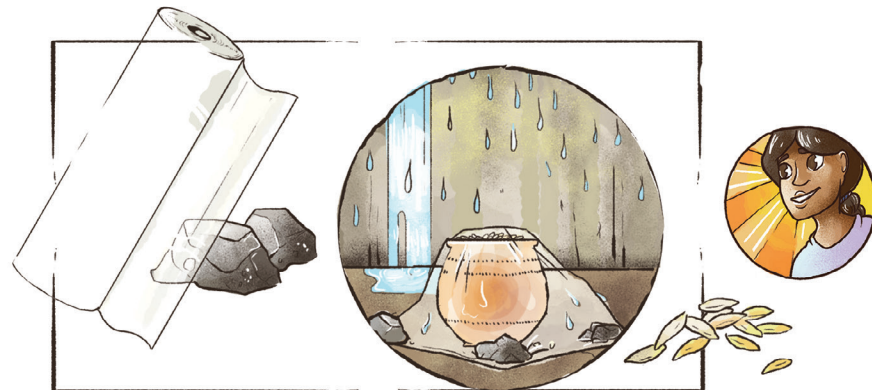
5. For shade, use trees

# Lesson: A roll of plastic or tarpaulin, or a bag may be used to protect seeds or food from rainfall

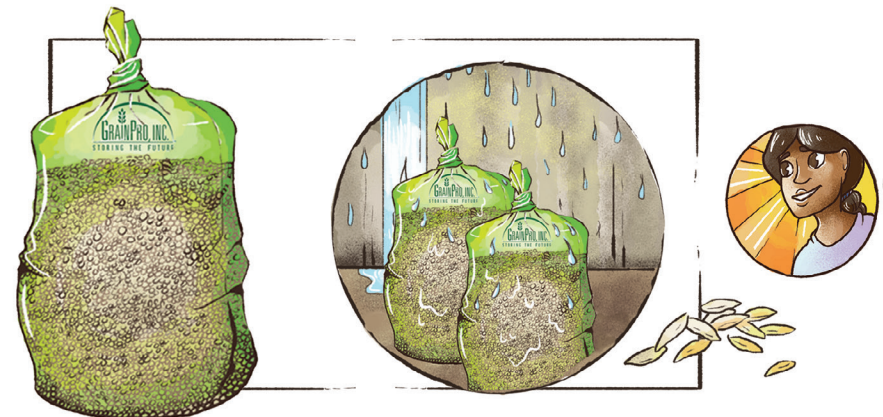
1. Earthquake causing damage to home or granary



2. Seeds will be damaged by rain



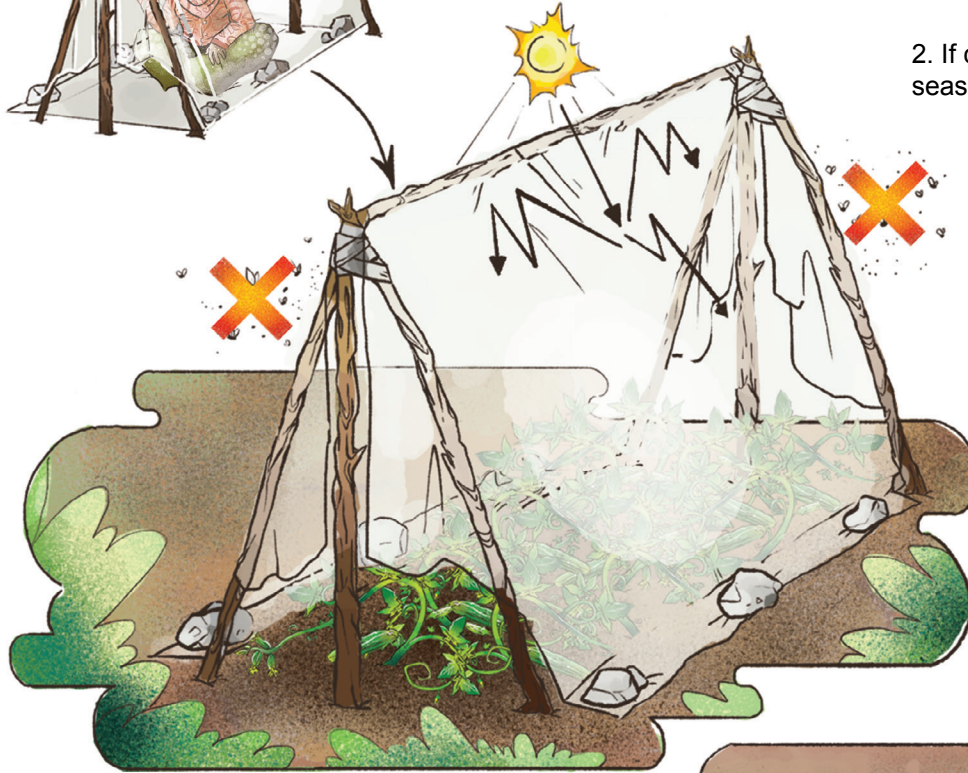
3. Roll of plastic or tarpaulin will protect seeds



4. Plastic bag will protect seeds from rain. A special bag from Grainpro will also protect seeds from insects and mold

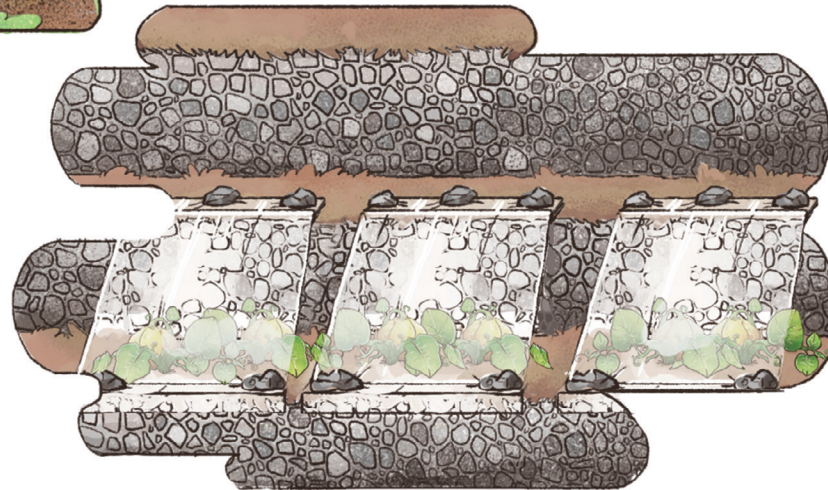
# Lesson: A tent shelter can be re-purposed later into a greenhouse or shade house for plants

1. Tent



2. If clear plastic, then use as a greenhouse in the winter season, or to protect against insects.

3. If dark plastic, then open sides of tent and use as a shade house to assist young vegetable seedlings to grow



4. Example of greenhouse on terrace



# Lesson: Tarpaulin or plastic used for tent shelters can be re-purposed to prevent weeds in home gardens

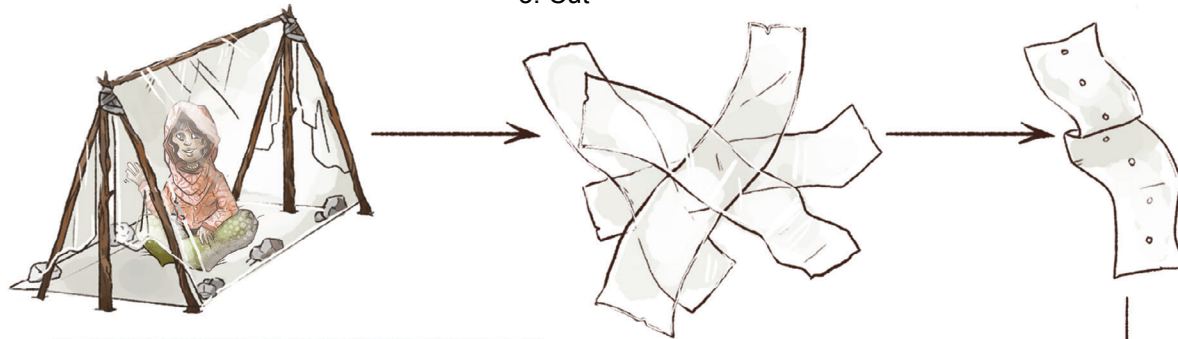
1. Vegetable garden with weeds



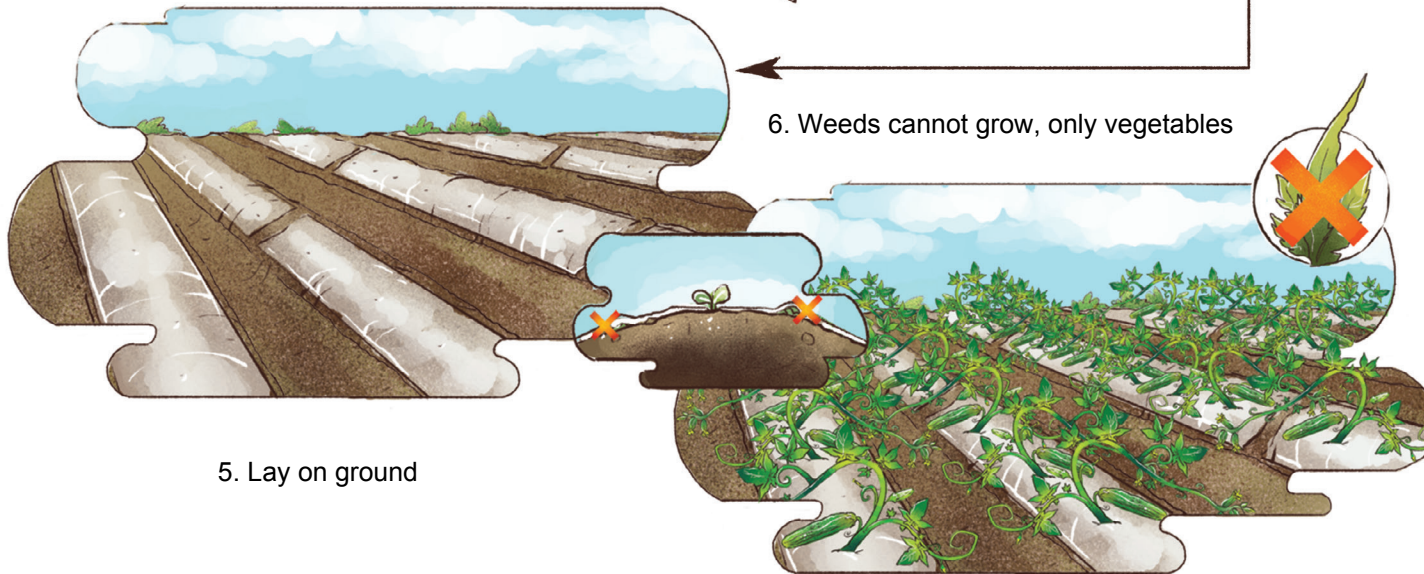
4. Create holes to insert vegetable seeds

2. Tent

3. Cut



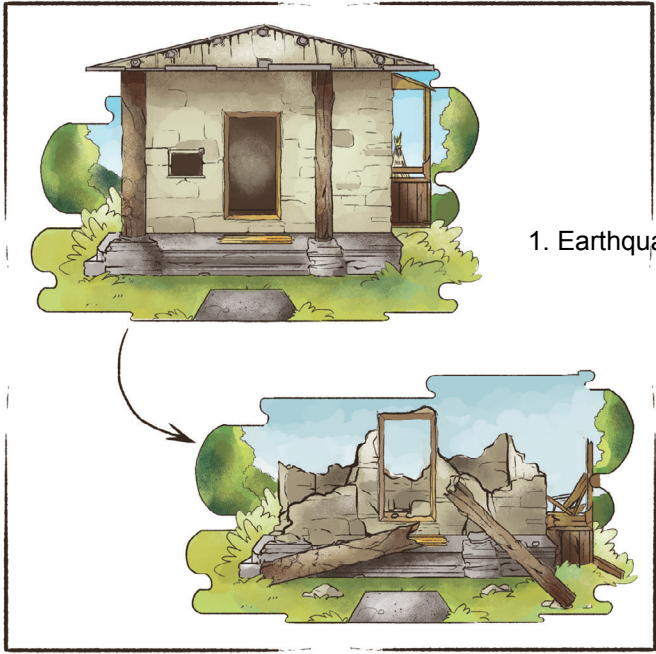
6. Weeds cannot grow, only vegetables



5. Lay on ground



Lesson: A foldable shovel that is light-weight and multipurpose can be used to remove earthquake debris, but re-purposed later to help with farming



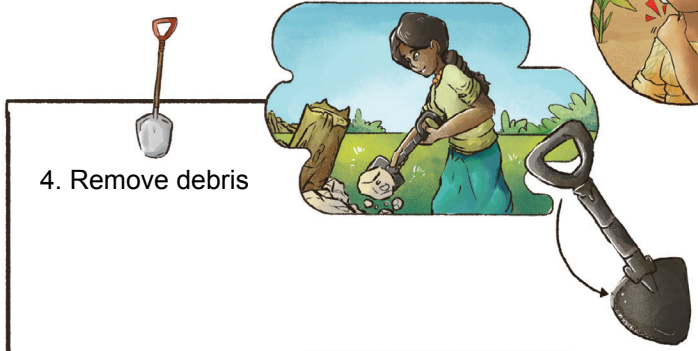
1. Earthquake



2. Removing debris by hand causes injury



3. Foldable shovel



4. Remove debris



5. Converts to hoe

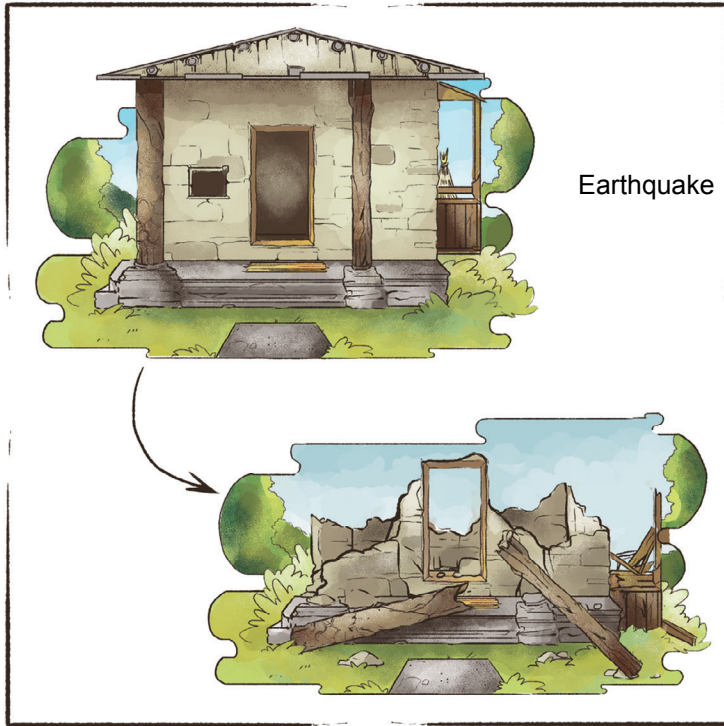


6. Converts to saw to cut wood



7. No injury

Lesson: Water-proof gloves can help to clean debris and later can be used for farming to protect hands

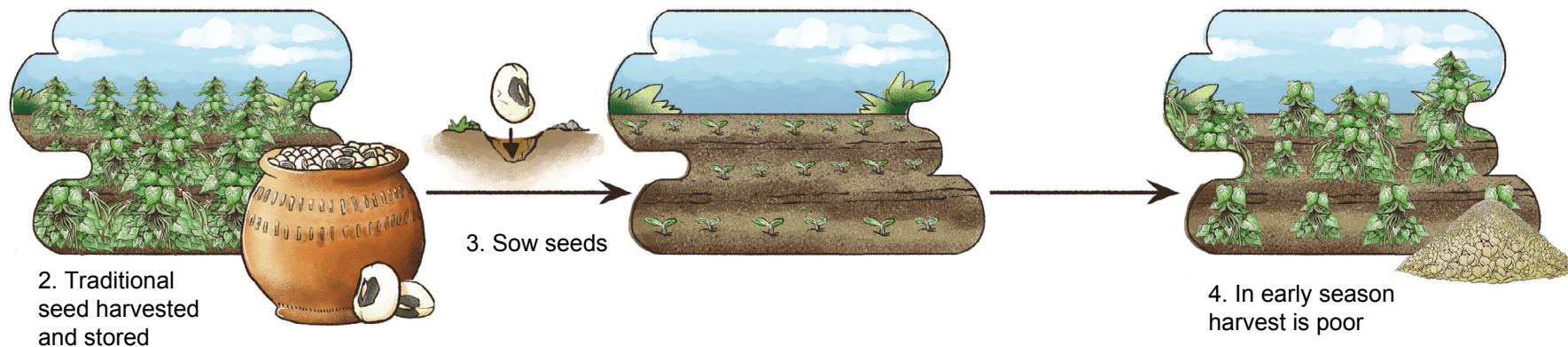


2. Gloves protect hands

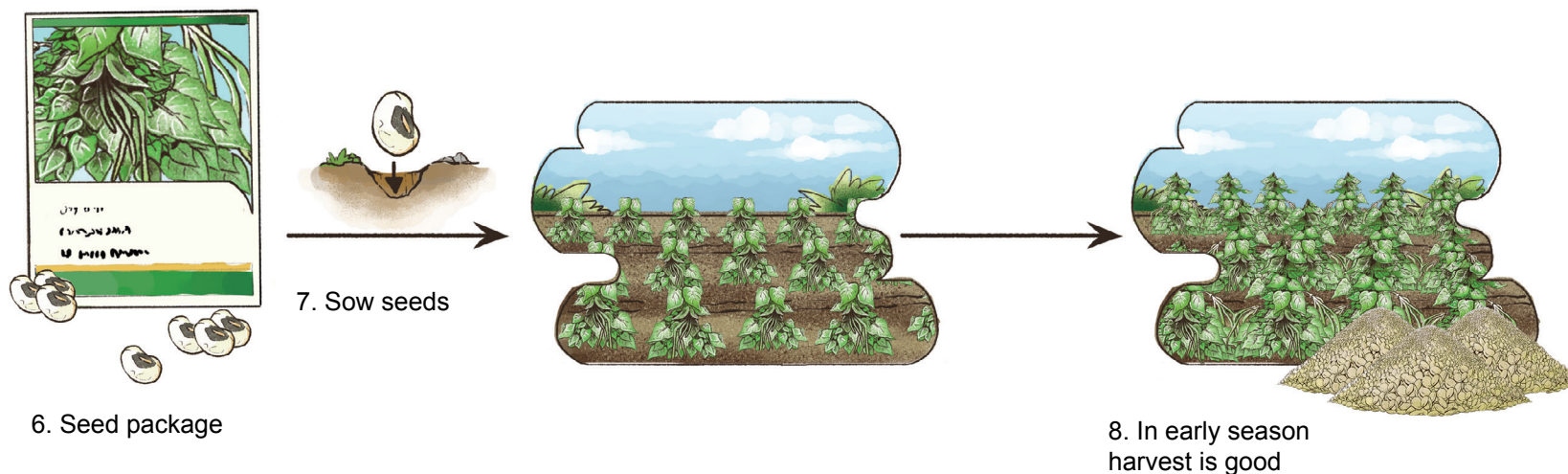


# Lesson: Seed package contains an early maturing variety to produce food early

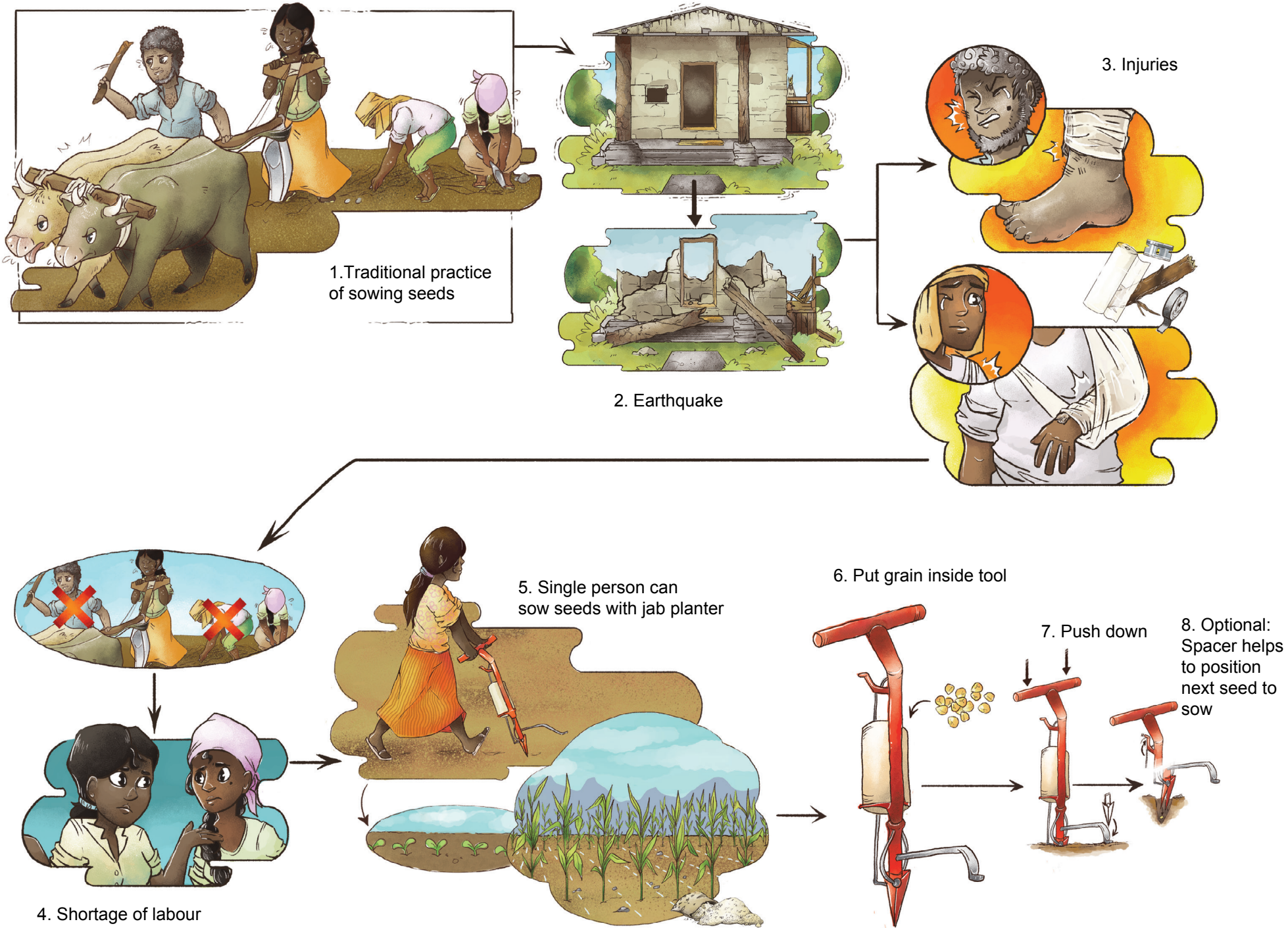
## 1. Traditional seed variety



## 5. Early maturing seed variety



# Lesson: A job planter reduces labour required to sow seeds



Lesson: After a cut, clean wound, then apply antibiotic to the wound, before adding a bandage to prevent infection

