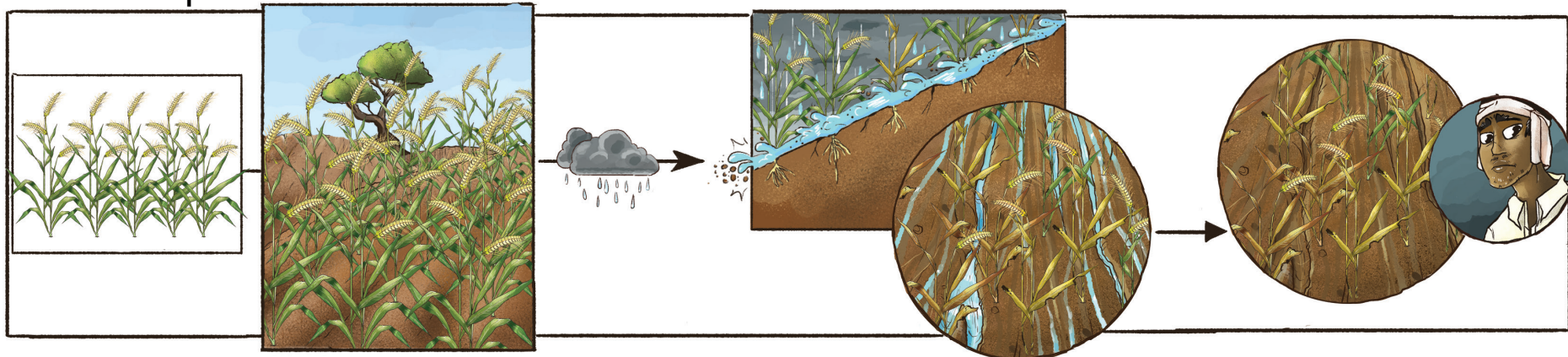
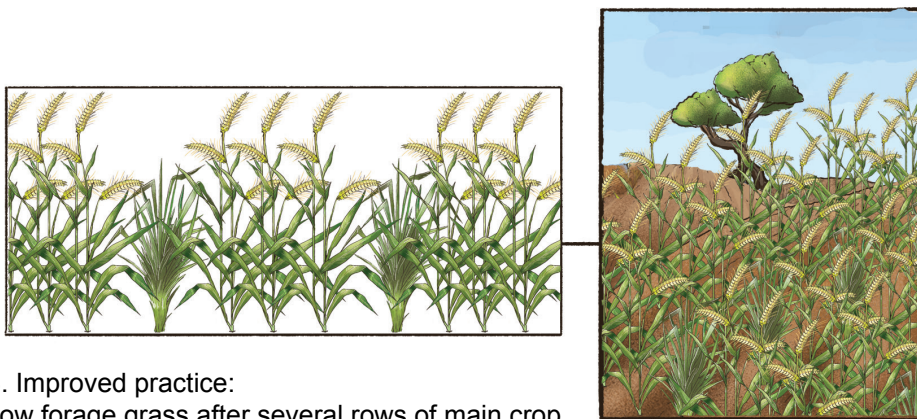


Lesson: On sloped, non-terraced land, sowing vetiver or other forage grasses will reduce erosion and prevent water loss



1. Traditional practice

2. Erosion



3. Improved practice:
sow forage grass after several rows of main crop
all in rows, perpendicular to slope

4. Less erosion since
forage grass roots grab soil

5. Forage
grass can
be fed to
livestock

