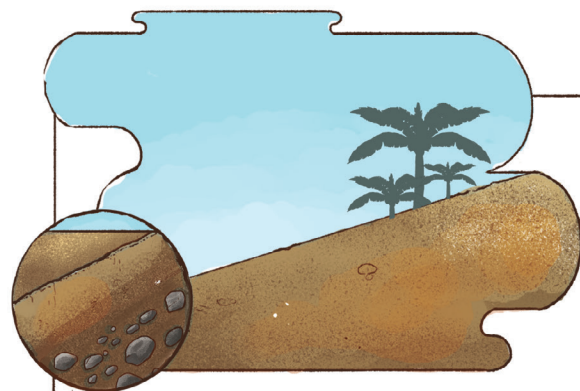
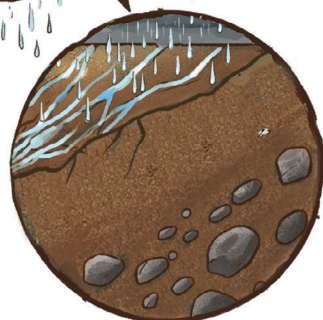


Lesson: Creating shallow trenches with a stick perpendicular to a slope will reduce soil erosion, capture water and increase yields

1. Traditional practice on slope



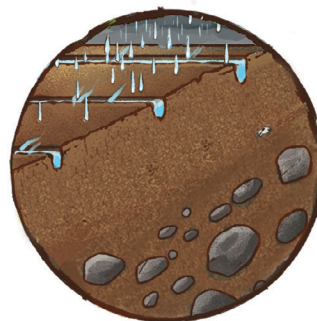
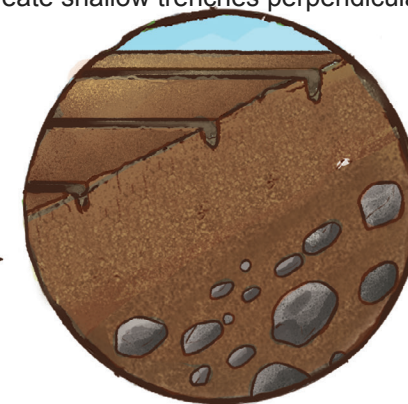
2. Erosion



3. Low yields



4. Improved practice: use stick to create shallow trenches perpendicular to slope



5. Trenches capture water flow and prevent erosion



6. Higher yields

