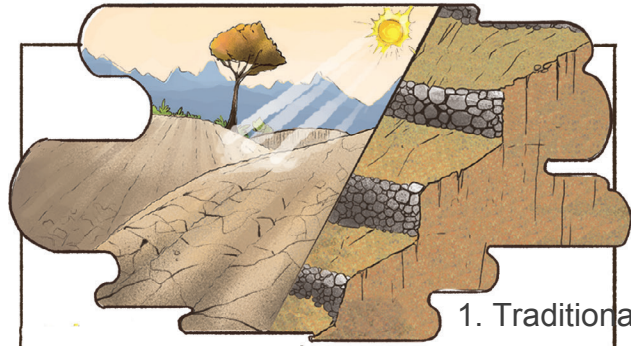
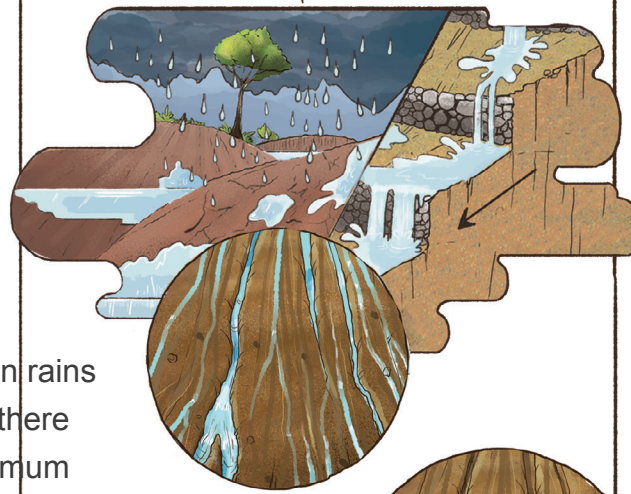


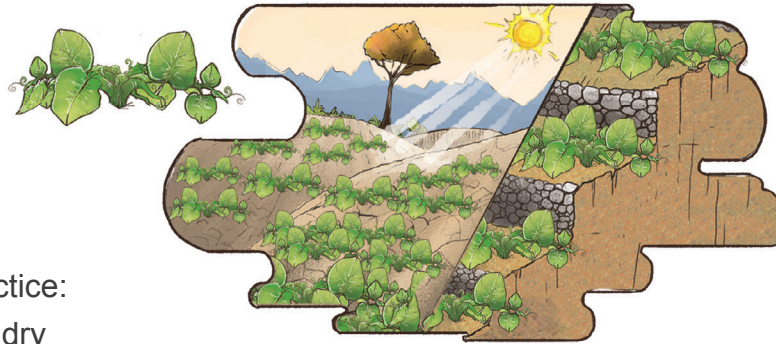
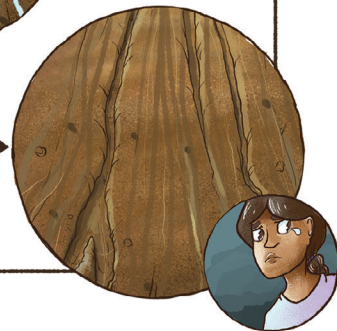
Lesson: Sowing a spreading type cover crop prior to the transition between the dry season and the wet season will reduce soil erosion and provide livestock feed in the dry season



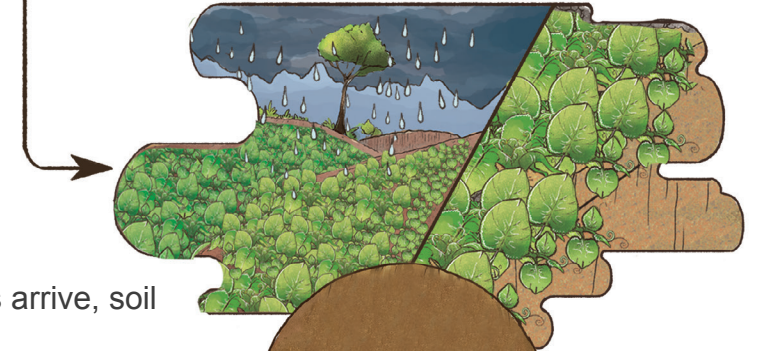
1. Traditional practice: soil is bare in the dry season on either sloped land or terraced land



2. When rains arrive, there is maximum soil erosion



3. Improved practice: sow drought tolerant cover crop in dry season using residual moisture



4. When rains arrive, soil is not bare



5. Less erosion



6. Source of livestock feed

