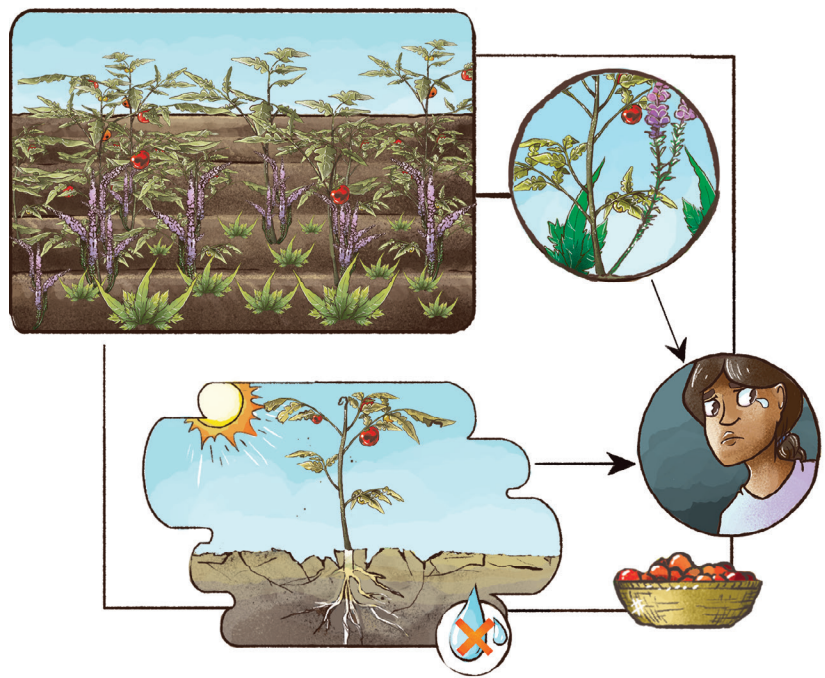
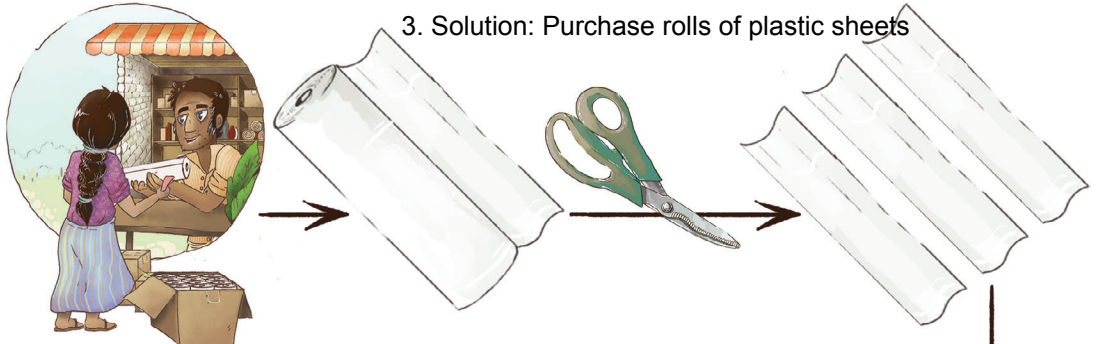


Lesson: Use plastic mulch to suppress weeds in the garden, prevent water loss and keep soil warm.

1. Problem: in garden weeds can grow

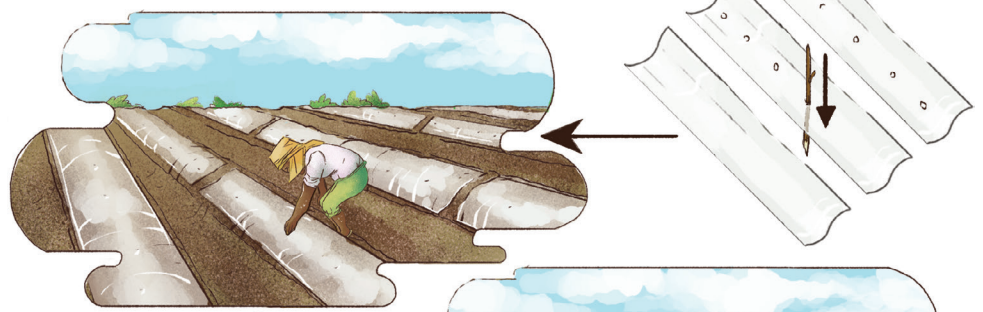


2. Problem: In hot season with low rainfall, crops will not grow.

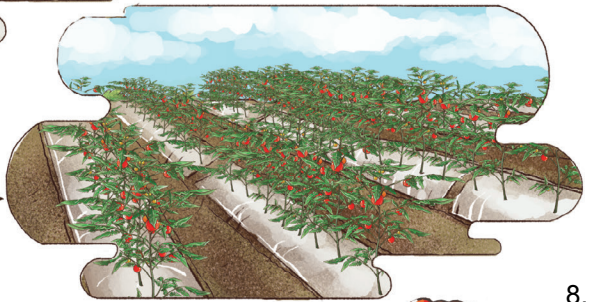


3. Solution: Purchase rolls of plastic sheets

4. Place on ground, create holes.

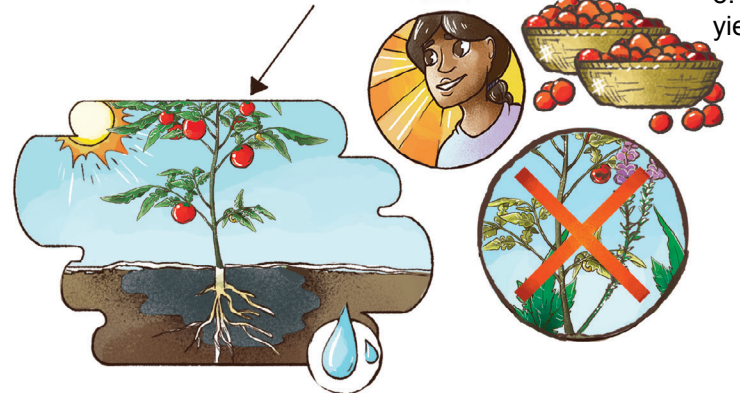


5. Sow seeds in holes



6. Vegetables grow without weeds.

7. Plastic prevents water from evaporating and keeps the soil warm.



8. High yield