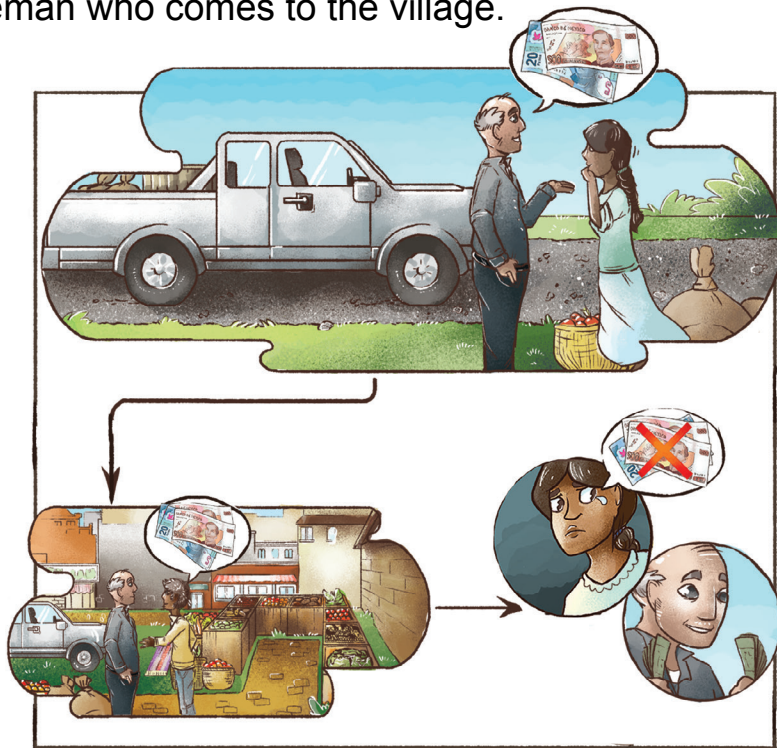
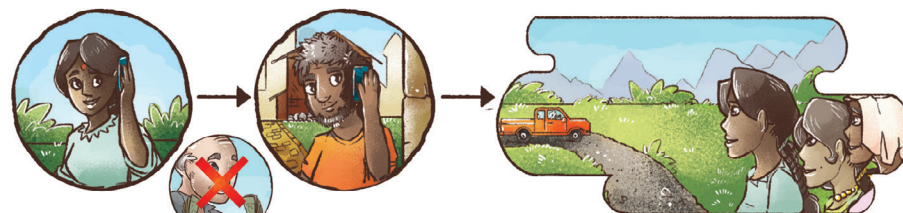


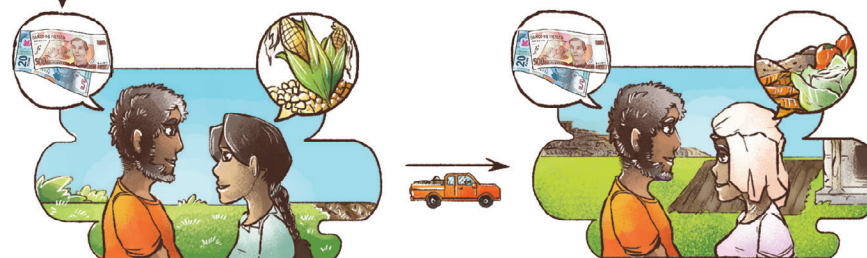
Lesson: It is better to sell farm harvest products directly to a friend or family member who lives in the city rather than to a middleman who comes to the village.



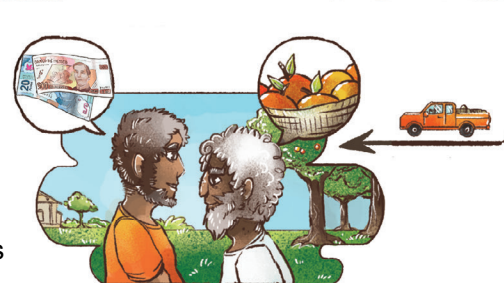
1. Traditional practice: middleman comes to the village and offers a low price for the farm harvest, then middleman goes to city merchant and sells for a higher price.



2. Improved practice: village should ask a friend or family member from the city to come to the village with a truck



3. City friend should buy products from different farmers at a fair price



4. City friend should sell products to city merchant and also receive reasonable profit

