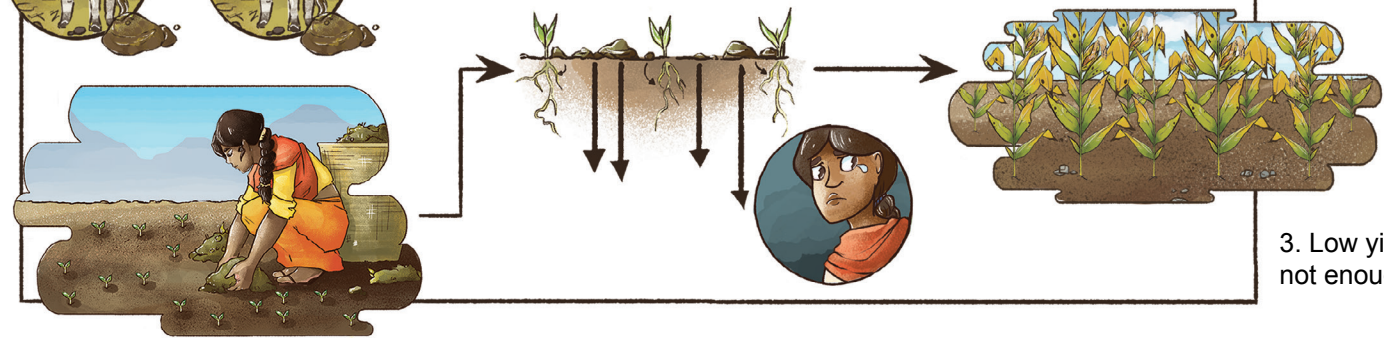


Lesson: Rather than traditional method of spreading manure, adding small amounts of manure directly to each seedling will reduce the total quantity of manure required

1. Traditional method of manure application requires many livestock

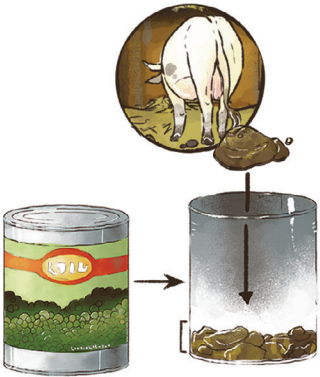


2. Nutrients of manure which is not near crops is not absorbed by the plant and is wasted



3. Low yields if manure is not enough

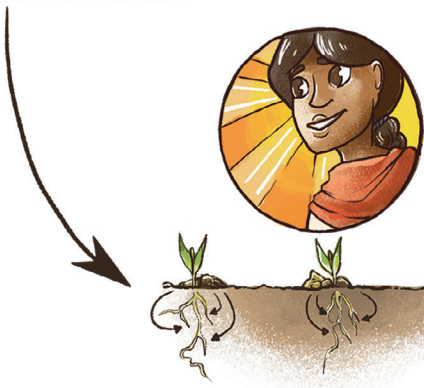
5. New practice reduces number of livestock required for manure production



4. Improved practice is to place manure inside tin can or container to spread



6. Spread manure from container directly to base of seed or seedling



7. All manure is absorbed by plants



8. Good yield with less manure