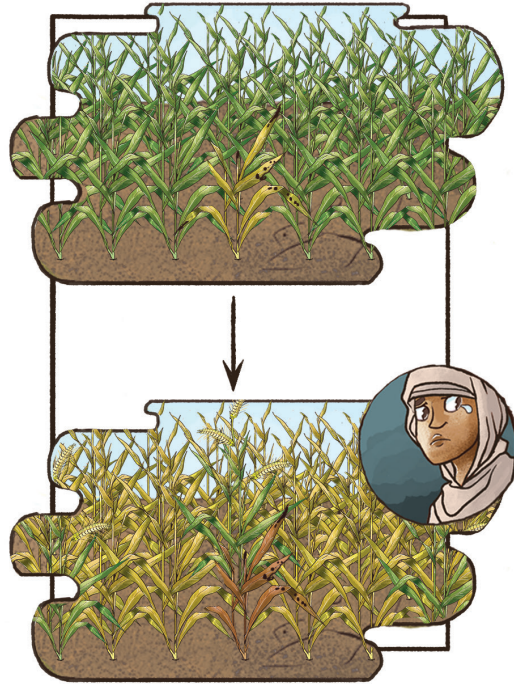
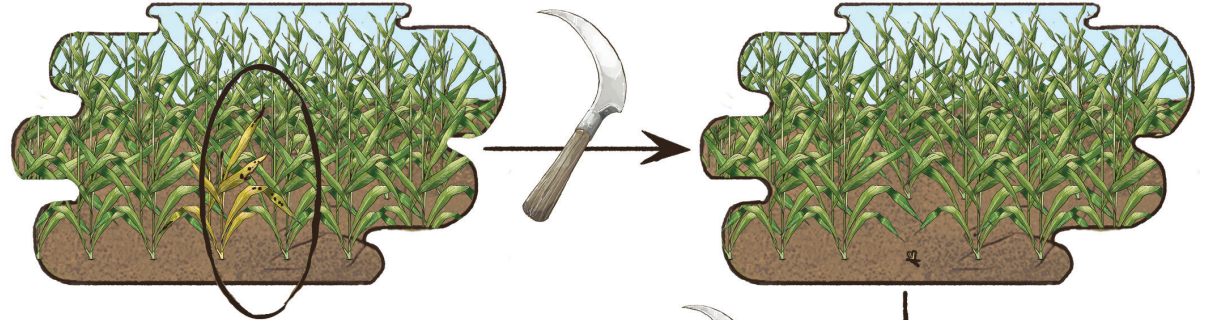


# Lesson: Constantly visual inspect fields for sick plants and remove them in order to improve the health of the field



1. Traditional practice: sick plants are allowed to remain in field. Many plants become sick, low yields

2. Improved practice: remove sick plants immediately to prevent spread of disease or pests



3. Wash the cutting knife as it may be contaminated with disease or pest



4. Field is healthy, high yields

